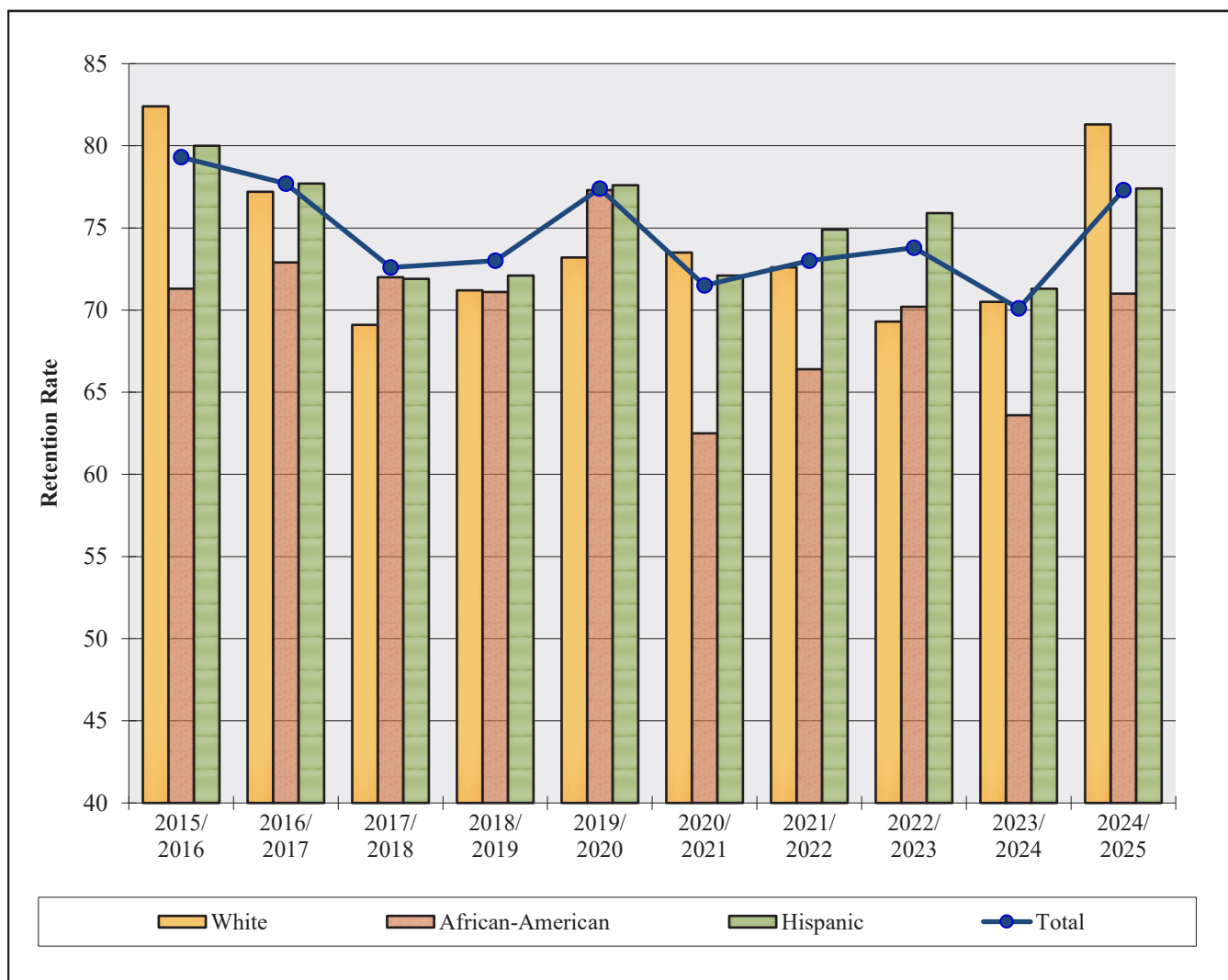


Table of Contents

Retention & Graduation.....	E-1
FTIC Freshmen One-year Retention Rates Chart	
Fall Semesters, 2016/2017 through 2024/2025	E-2
FTIC Freshmen Six-year Graduation Rates Chart	
Fall Semesters, 2010/2016 through 2019/2025	E-3
FTIC Freshmen Five-year Graduation Rates Chart	
Fall Semesters, 2011/2016 through 2020/2025	E-4
FTIC Freshmen Four-year Graduation Rates Chart	
Fall Semesters, 2012/2016 through 2021/2025	E-5
FTIC Freshmen Retention and Graduation Tables	
Fall 2014 through Fall 2016 Cohorts.....	E-6
Fall 2020 through Fall 2022 Cohorts.....	E-7
Fall 2023 through Fall 2025 Cohorts.....	E-8
FTIC Freshmen Six-Year Retention and Graduation Chart	
Fall Semester Total Cohorts, 2017 through 2019	E-9
Fall Semester Cohorts by Ethnicity, 2019	E-10
Transfer Students Four-year Graduation Rates Chart	
Fall Semesters, 2012/2016 through 2021/2025	E-11
Transfer Students Three-year Graduation Rates Chart	
Fall Semesters, 2013/2016 through 2022/2025	E-12
Transfer Students Two-year Graduation Rates Chart	
Fall Semesters, 2014/2016 through 2023/2025	E-13
Transfer Retention and Graduation Tables	
Fall 2020 through Fall 2022 Cohorts.....	E-14
Fall 2023 through Fall 2025 Cohorts.....	E-15
Transfer Four-Year Retention and Graduation Chart	
Fall Semester Total Cohorts, 2019 through 2021	E-16
Fall Semester Cohorts by Ethnicity, 2021	E-17
Master's Level New Admits Retention and Graduation Tables	
2019-20 through 2021-22 Cohorts	E-18
2022-23 through 2024-25 Cohorts	E-19
Master's Level New Admits Four-Year Retention and Graduation Chart	
Total Cohorts, 2018-19 through 2020-21	E-20
Total Cohorts by Ethnicity, 2020-21.....	E-21

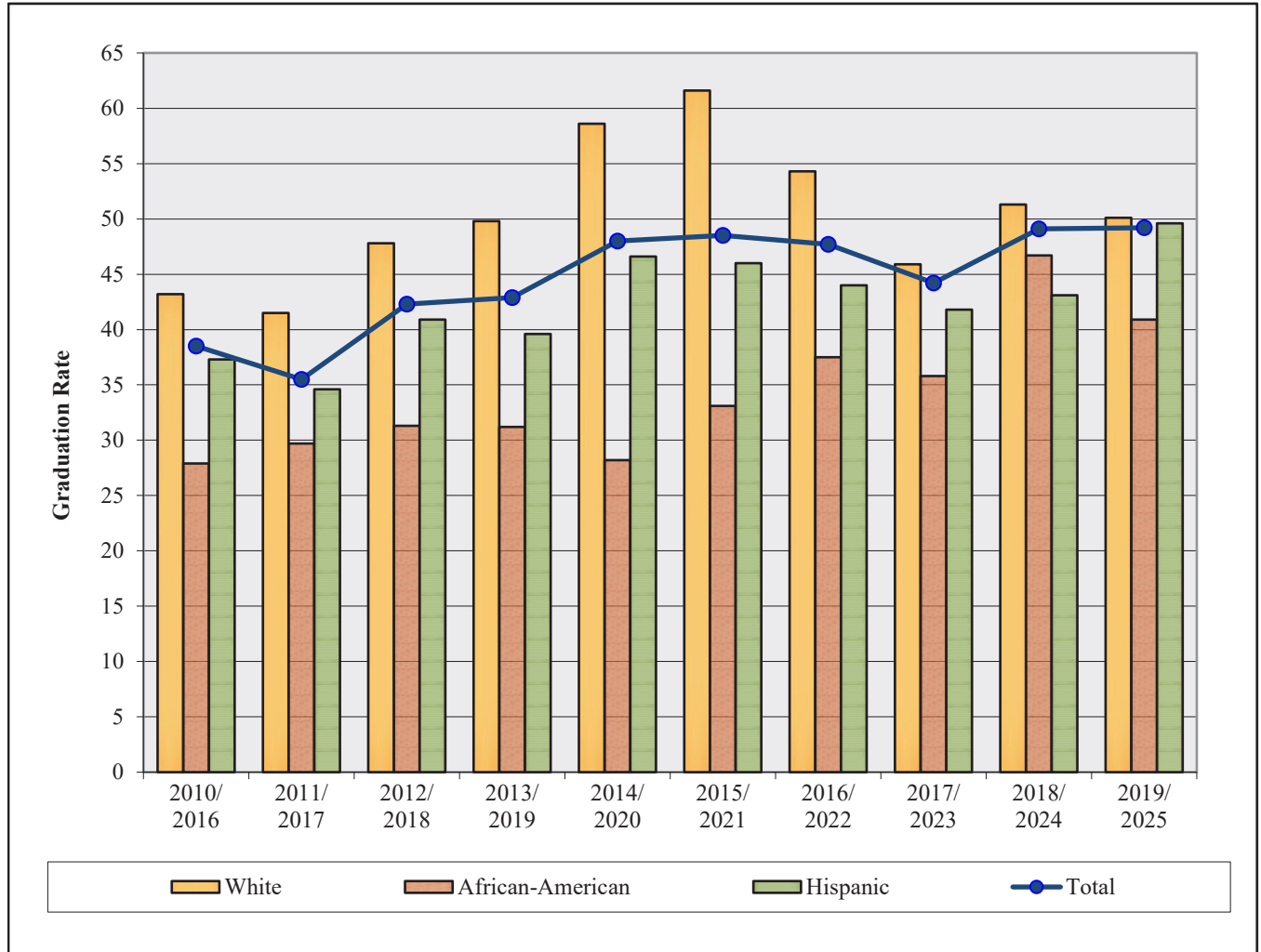
FTIC One-year Retention Rates Chart
Full-time Degree-seeking Freshmen by Ethnicity
Fall Semesters, 2016/2017 through 2024/2025



FTIC Freshmen One-year Retention											
Category		2015/ 2016	2016/ 2017	2017/ 2018	2018/ 2019	2019/ 2020	2020/ 2021	2021/ 2022	2022/ 2023	2023/ 2024	2024/ 2025
White	Cohort	289	324	353	337	339	275	321	290	315	288
	Rate	82.4	77.2	69.1	71.2	73.2	73.5	72.6	69.3	70.5	81.3
African-American	Cohort	275	277	232	225	286	253	265	292	316	335
	Rate	71.3	72.9	72.0	71.1	77.3	62.5	66.4	70.2	63.6	71.0
Hispanic	Cohort	435	507	491	480	500	420	487	576	677	766
	Rate	80.0	77.7	71.9	72.1	77.6	72.1	74.9	75.9	71.3	77.4
Total	Cohort	1,132	1,278	1,243	1,223	1,277	1,093	1,216	1,330	1,445	1,566
	Rate	79.3	77.7	72.6	73.0	77.4	71.5	73.0	73.8	70.1	77.3

Note: Cohort includes first-time-in-college, full-time, degree-seeking freshmen. Rate is defined as the number of students who graduated divided by the number of students in the initial cohort.

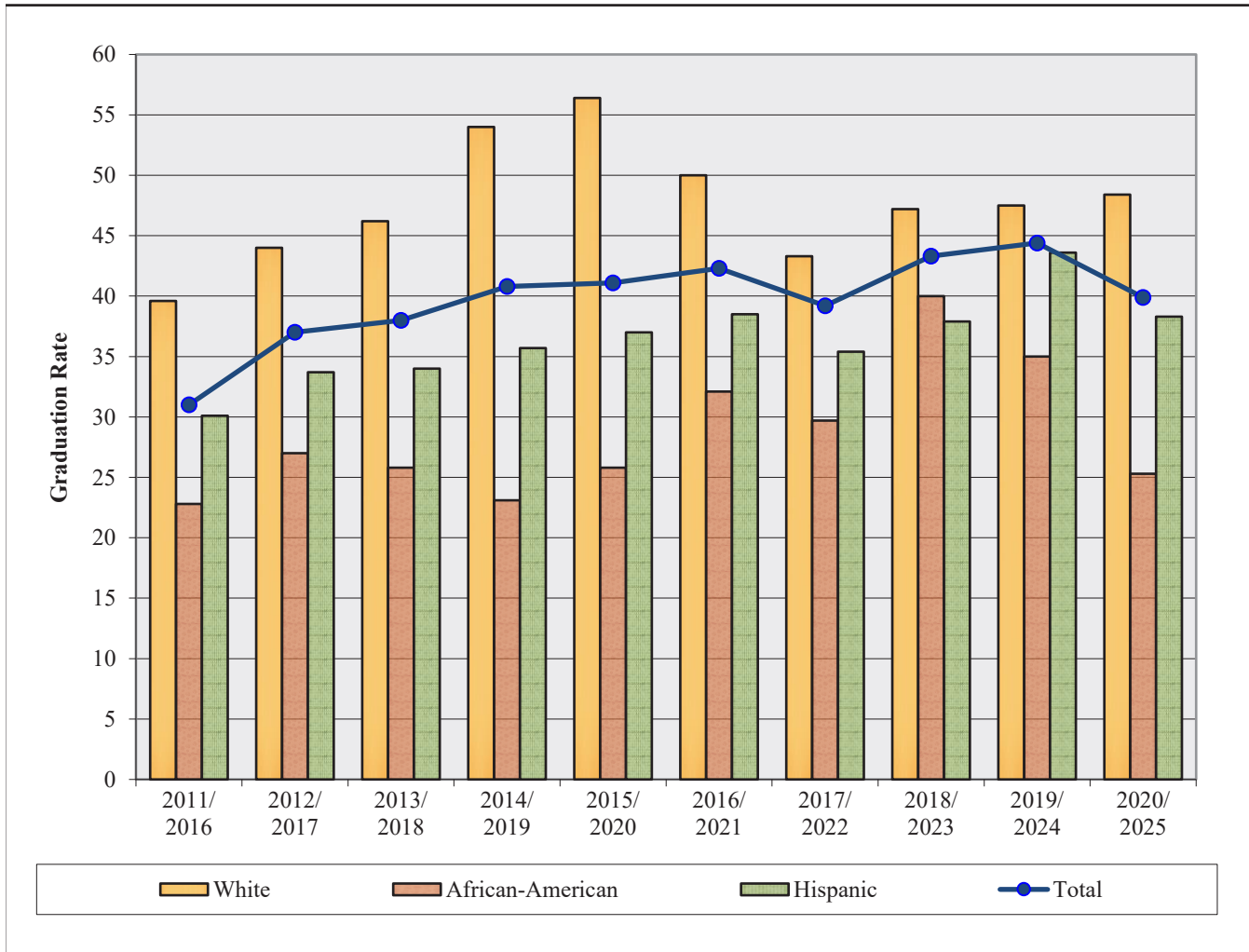
FTIC Six-year Graduation Rates Chart
Full-time Degree-seeking Freshmen by Ethnicity
Fall Semesters, 2010/2016 through 2019/2025



Six-year Graduation											
Category		2010/ 2016	2011/ 2017	2012/ 2018	2013/ 2019	2014/ 2020	2015/ 2021	2016/ 2022	2017/ 2023	2018/ 2024	2019/ 2025
White	Cohort	257	260	341	333	326	289	324	353	337	339
	Rate	43.2	41.5	47.8	49.8	58.6	61.6	54.3	45.9	51.3	50.1
African-American	Cohort	272	337	300	295	273	275	277	232	225	286
	Rate	27.9	29.7	31.3	31.2	28.2	33.1	37.5	35.8	46.7	40.9
Hispanic	Cohort	303	332	389	371	384	435	507	491	480	500
	Rate	37.3	34.6	40.9	39.6	46.6	46.0	44.0	41.8	43.1	49.6
Total	Cohort	947	1,059	1,166	1,151	1,150	1,132	1,278	1,243	1,223	1,223
	Rate	38.5	35.5	42.3	42.9	48.0	48.5	47.7	44.2	49.1	49.2

Note: Cohort includes first-time-in-college, full-time, degree-seeking freshmen. Rate is defined as the number of students who graduated divided by the number of students in the initial cohort.

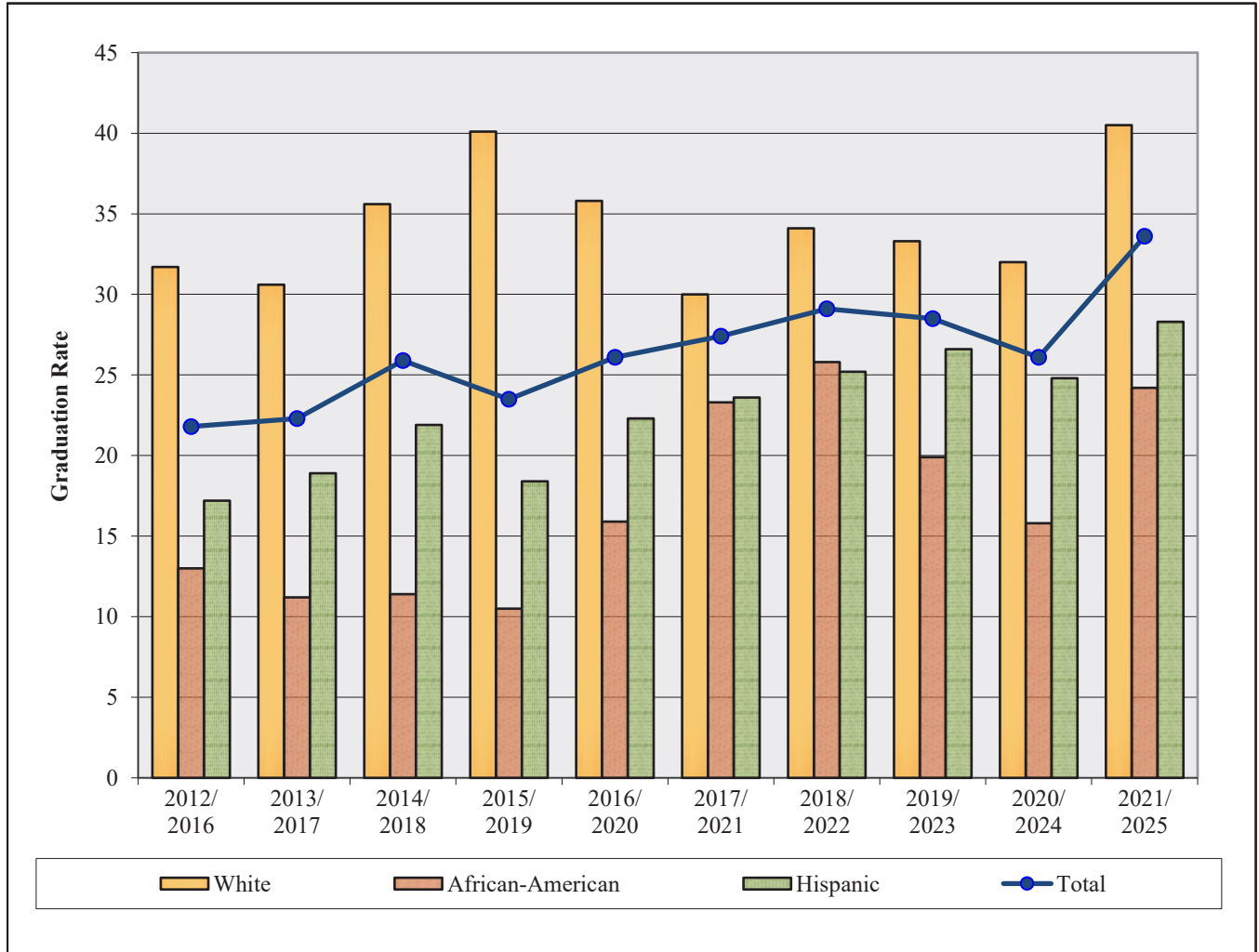
FTIC Five-year Graduation Rates Chart
Full-time Degree-seeking Freshmen by Ethnicity
Fall Semesters, 2011/2016 through 2020/2025



		Five-year Graduation									
Category		2011/ 2016	2012/ 2017	2013/ 2018	2014/ 2019	2015/ 2020	2016/ 2021	2017/ 2022	2018/ 2023	2019/ 2024	2020/ 2025
White	Cohort	260	341	333	326	289	324	353	337	339	275
	Rate	39.6	44.0	46.2	54.0	56.4	50.0	43.3	47.2	47.5	48.4
African-American	Cohort	337	300	295	273	275	277	232	225	286	253
	Rate	22.8	27.0	25.8	23.1	25.8	32.1	29.7	40.0	35.0	25.3
Hispanic	Cohort	332	389	371	384	435	507	491	480	500	420
	Rate	30.1	33.7	34.0	35.7	37.0	38.5	35.4	37.9	43.6	38.3
Total	Cohort	1,059	1,166	1,151	1,150	1,132	1,278	1,243	1,223	1,277	1,093
	Rate	31.0	37.0	38.0	40.8	41.1	42.3	39.2	43.3	44.4	39.9

Note: Cohort includes first-time-in-college, full-time, degree-seeking freshmen. Rate is defined as the number of students who graduated divided by the number of students in the initial cohort.

FTIC Four-year Graduation Rates Chart
Full-time Degree-seeking Freshmen by Ethnicity
Fall Semesters, 2012/2016 through 2021/2025



Four-year Graduation											
Category		2012/ 2016	2013/ 2017	2014/ 2018	2015/ 2019	2016/ 2020	2017/ 2021	2018/ 2022	2019/ 2023	2020/ 2024	2021/ 2025
White	Cohort	341	333	326	289	324	353	337	339	275	321
	Rate	31.7	30.6	35.6	40.1	35.8	30.0	34.1	33.3	32.0	40.5
African-American	Cohort	300	295	273	275	277	232	225	286	253	265
	Rate	13.0	11.2	11.4	10.5	15.9	23.3	25.8	19.9	15.8	24.2
Hispanic	Cohort	389	371	384	435	507	491	480	500	420	487
	Rate	17.2	18.9	21.9	18.4	22.3	23.6	25.2	26.6	24.8	28.3
Total	Cohort	1,166	1,151	1,150	1,132	1,278	1,243	1,223	1,277	1,093	1,216
	Rate	21.8	22.3	25.9	23.5	26.1	27.4	29.1	28.5	26.1	33.6

Note: Cohort includes first-time-in-college, full-time, degree-seeking freshmen. Rate is defined as the number of students who graduated divided by the number of students in the initial cohort.

FTIC Retention and Graduation Tables
Full-time Degree-seeking Freshmen by Ethnicity
Fall 2017 through Fall 2019 Cohorts

Fall 2017 Retention	Cohort Base	After 1 yr.		After 2 yrs.		After 3 yrs.		After 4 yrs.		After 5 yrs.		After 6 yrs.		After 7 yrs.	
		#	%	#	%	#	%	#	%	#	%	#	%	#	%
White	353	244	69.1	198	56.1	159	45.0	70	19.8	23	6.5	12	3.4	4	1.1
African-American	232	167	72.0	127	54.7	96	41.4	45	19.4	26	11.2	13	5.6	9	3.9
Hispanic	491	353	71.9	286	58.2	226	46.0	115	23.4	53	10.8	22	4.5	16	3.3
AS/PI	143	121	84.6	97	67.8	91	63.6	37	25.9	14	9.8	5	3.5	4	2.8
AI/AN	13	11	84.6	8	61.5	4	30.8	2	15.4	1	7.7	0	0.0	0	0.0
Other	8	4	50.0	4	50.0	2	25.0	2	25.0	1	12.5	1	12.5	1	12.5
Total	1,243	902	72.6	722	58.1	580	46.7	271	21.8	119	9.6	54	4.3	34	2.7
Graduation															
White						22	6.2	106	30.0	153	43.3	162	45.9	183	51.8
African-American						4	1.7	54	23.3	69	29.7	83	35.8	114	49.1
Hispanic						18	3.7	116	23.6	174	35.4	205	41.8	240	48.9
AS/PI						9	6.3	58	40.6	82	57.3	89	62.2	96	67.1
AI/AN						2	1.4	5	38.5	6	46.2	7	53.8	7	53.8
Other						0	0.0	1	12.5	2	25.0	2	25.0	5	62.5
Total						55	4.4	341	27.4	487	39.2	549	44.2	647	52.1
Fall 2018															
Retention	Cohort Base	After 1 yr.		After 2 yrs.		After 3 yrs.		After 4 yrs.		After 5 yrs.		After 6 yrs.		After 7 yrs.	
		#	%	#	%	#	%	#	%	#	%	#	%	#	%
White	337	240	71.2	208	61.7	174	45.0	68	20.2	23	6.8	8	2.4	3	0.9
African-American	225	160	71.1	138	61.3	118	41.4	55	24.4	23	10.2	10	4.4	6	2.7
Hispanic	480	346	72.1	275	57.3	231	46.0	114	23.8	48	10.0	22	4.6	14	2.9
AS/PI	157	129	82.2	109	69.4	93	63.6	47	29.9	13	8.3	1	0.6	0	0.0
AI/AN	18	13	72.2	11	61.1	8	30.8	2	11.1	1	5.6	0	0.0	0	0.0
Other	4	3	75.0	4	100.0	3	25.0	1	25.0	1	25.0	0	0.0	0	0.0
Total	1,223	893	73.0	747	61.1	629	46.7	287	23.5	109	8.9	42	3.4	23	1.9
Graduation															
White						22	6.2	115	34.1	159	47.2	173	51.3	180	53.4
African-American						5	1.7	58	25.8	90	40.0	105	46.7	107	47.6
Hispanic						16	3.7	121	25.2	182	37.9	207	43.1	218	45.4
AS/PI						9	6.3	52	33.1	87	55.4	102	65.0	103	65.6
AI/AN						1	1.4	6	33.3	7	38.9	8	44.4	8	44.4
Other						0	0.0	2	50.0	2	50.0	3	75.0	3	75.0
Total						55	4.4	356	29.1	529	43.3	600	49.1	621	50.8
Fall 2019															
Retention	Cohort Base	After 1 yr.		After 2 yrs.		After 3 yrs.		After 4 yrs.		After 5 yrs.		After 6 yrs.			
		#	%	#	%	#	%	#	%	#	%	#	%	#	%
White	339	248	73.2	198	58.4	166	49.0	62	18.3	24	7.1	11	3.2		
African-American	286	221	77.3	159	55.6	138	48.3	74	25.9	25	8.7	9	3.1		
Hispanic	500	388	77.6	310	62.0	259	51.8	130	26.0	45	9.0	18	3.6		
AS/PI	138	119	86.2	94	68.1	77	55.8	33	23.9	9	6.5	6	4.3		
AI/AN	5	5	100.0	3	60.0	2	40.0	0	0.0	1	20.0	0	0.0		
Int'l	4	4	100.0	3	75.0	2	50.0	0	0.0	0	0.0	0	0.0		
Total	1,277	989	77.4	771	60.4	647	50.7	300	23.5	105	8.2	44	3.4		
Graduation															
White						25	7.4	113	33.3	161	47.5	170	50.1		
African-American						7	2.4	57	19.9	100	35.0	117	40.9		
Hispanic						23	4.6	133	26.6	218	43.6	248	49.6		
AS/PI						13	9.4	56	40.6	83	60.1	87	63.0		
AI/AN						0	0.0	2	40.0	2	40.0	3	60.0		
Int'l						0	0.0	1	25.0	1	25.0	1	25.0		
Other						0	0.0	2	40.0	2	40.0	2	40.0		
Total						68	5.3	364	28.5	567	44.4	628	49.2		

Note: FTIC denotes first-time-in-college.

**FTIC Retention and Graduation Tables
Full-time Degree-seeking Freshmen by Ethnicity
Fall 2020 through Fall 2022 Cohorts**

Fall 2020		Cohort		After 1 yr.		After 2 yrs.		After 3 yrs.		After 4 yrs.		After 5 yrs.	
Retention	Base	#	%	#	%	#	%	#	%	#	%	#	%
White	275	202	73.5	169	61.5	137	49.8	55	20.0	15	5.5		
African-American	253	158	62.5	110	43.5	85	33.6	42	16.6	24	9.5		
Hispanic	420	303	72.1	236	56.2	189	45.0	95	22.6	35	8.3		
AS/PI	129	108	83.7	88	68.2	77	59.7	35	27.1	12	9.3		
AI/AN	13	7	53.8	5	38.5	5	38.5	3	23.1	1	7.7		
Int'l	2	2	100.0	2	100.0	1	50.0	0	0.0	0	0.0		
Total	1,093	781	71.5	611	55.9	497	45.5	231	21.1	88	8.1		
Graduation													
White						20	7.3	88	32.0	133	48.4		
African-American						9	3.6	40	15.8	64	25.3		
Hispanic						21	5.0	104	24.8	161	38.3		
AS/PI						12	9.3	50	38.8	73	56.6		
AI/AN						0	0.0	2	15.4	4	30.8		
Other						0	0.0	0	0.0	0	0.0		
Total						62	5.7	285	26.1	436	39.9		
Fall 2021													
Retention	Cohort Base	#	%	#	%	#	%	#	%				
White	321	233	72.6	190	59.2	146	45.5	51	15.9				
African-American	265	176	66.4	134	50.6	107	40.4	60	22.6				
Hispanic	487	365	74.9	284	58.3	231	47.4	108	22.2				
AS/PI	126	99	78.6	90	71.4	75	59.5	20	15.9				
AI/AN	9	7	77.8	7	77.8	7	77.8	2	22.2				
Other	3	3	100.0	2	66.7	2	66.7	0	0.0				
Total	1,216	888	73.0	711	58.5	572	47.0	243	20.0				
Graduation													
White						33	10.3	130	40.5				
African-American						20	7.5	64	24.2				
Hispanic						36	7.4	138	28.3				
AS/PI						12	9.5	66	52.4				
AI/AN						0	0.0	5	55.6				
Other						0	0.0	2	66.7				
Total						101	8.3	408	33.6				
Fall 2022													
Retention	Cohort Base	#	%	#	%	#	%						
White	290	201	69.3	161	55.5	130	44.8						
African-American	292	205	70.2	157	53.8	136	46.6						
Hispanic	576	437	75.9	338	58.7	287	49.8						
AS/PI	126	106	84.1	90	71.4	85	67.5						
AI/AN	15	9	60.0	8	53.3	6	40.0						
Other	24	17	70.8	13	54.2	12	50.0						
Total	1,330	982	73.8	772	58.0	660	49.6						
Graduation													
White						23	7.9						
African-American						7	2.4						
Hispanic						44	7.6						
AS/PI						6	4.8						
AI/AN						2	1.6						
Other						1	4.2						
Total						83	6.2						

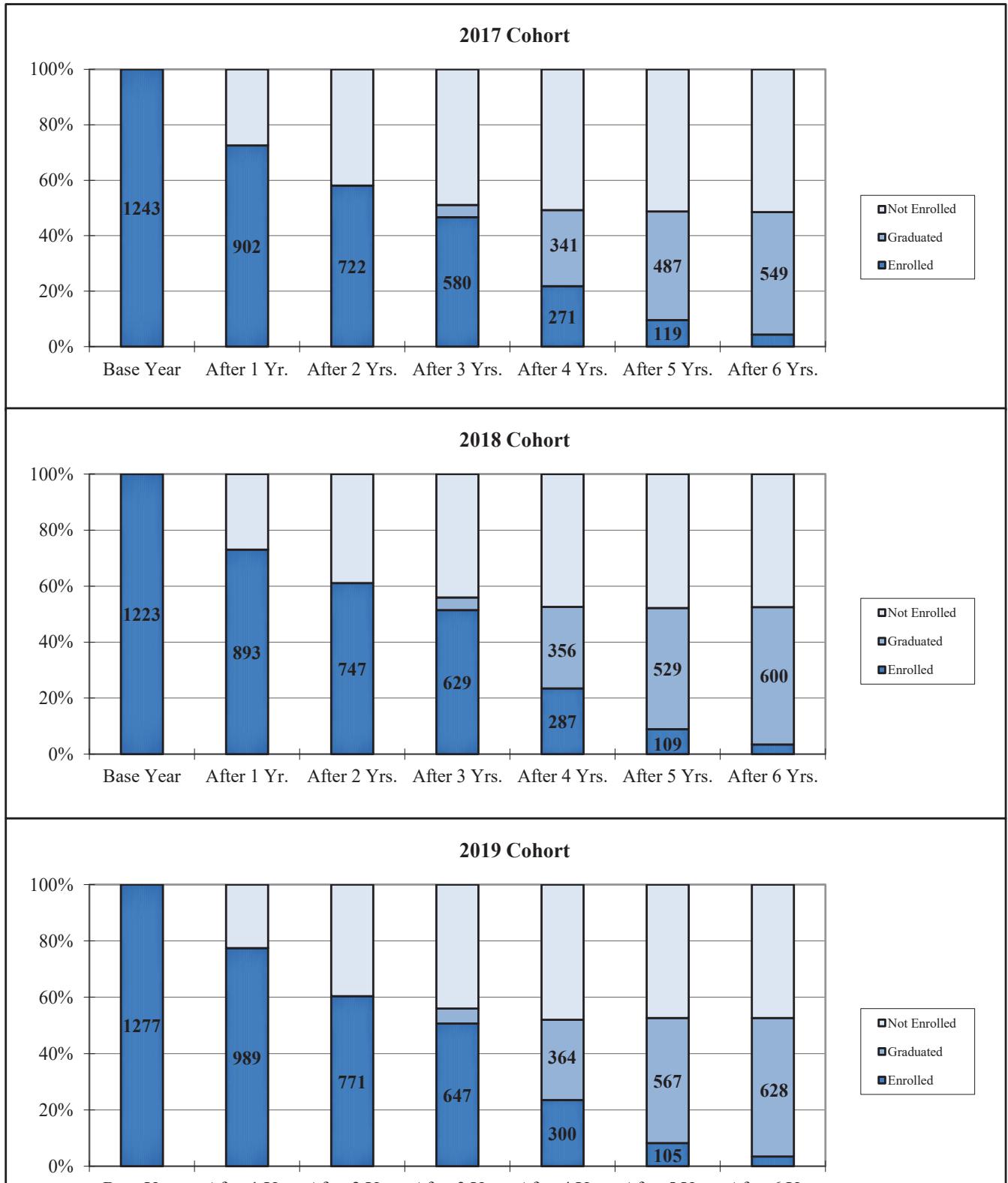
Note: FTIC denotes first-time-in-college.

**FTIC Retention and Graduation Tables
Full-time Degree-seeking Freshmen by Ethnicity
Fall 2023 through Fall 2025 Cohorts**

<u>Fall 2023</u> Retention	Cohort Base	<u>After 1 yr.</u>		<u>After 2 yrs.</u>					
		<u>#</u>	<u>%</u>	<u>#</u>	<u>%</u>				
White	315	222	70.5	189	60.0				
African-American	316	201	63.6	157	49.7				
Hispanic	677	483	71.3	411	60.7				
AS/PI	97	84	86.6	74	76.3				
AI/AN	7	4	57.1	4	57.1				
Other	30	16	53.3	14	46.7				
Total	1,445	1,013	70.1	852	59.0				
Graduation									
White									
African-American									
Hispanic									
AS/PI									
AI/AN									
Other									
Total									
Fall 2024									
Retention	Cohort Base	<u>After 1 yr.</u>							
		<u>#</u>	<u>%</u>						
White	288	234	81.3						
African-American	335	238	71.0						
Hispanic	766	593	77.4						
AS/PI	117	99	84.6						
AI/AN	9	5	55.6						
Other	40	31	77.5						
Total	1,566	1,211	77.3						
Graduation									
White									
African-American									
Hispanic									
AS/PI									
AI/AN									
Other									
Total									
Fall 2025									
Retention	Cohort Base								
White	248								
African-American	334								
Hispanic	731								
AS/PI	130								
AI/AN	12								
Other	17								
Total	1,483								
Graduation									
White									
African-American									
Hispanic									
AS/PI									
AI/AN									
Other									
Total									

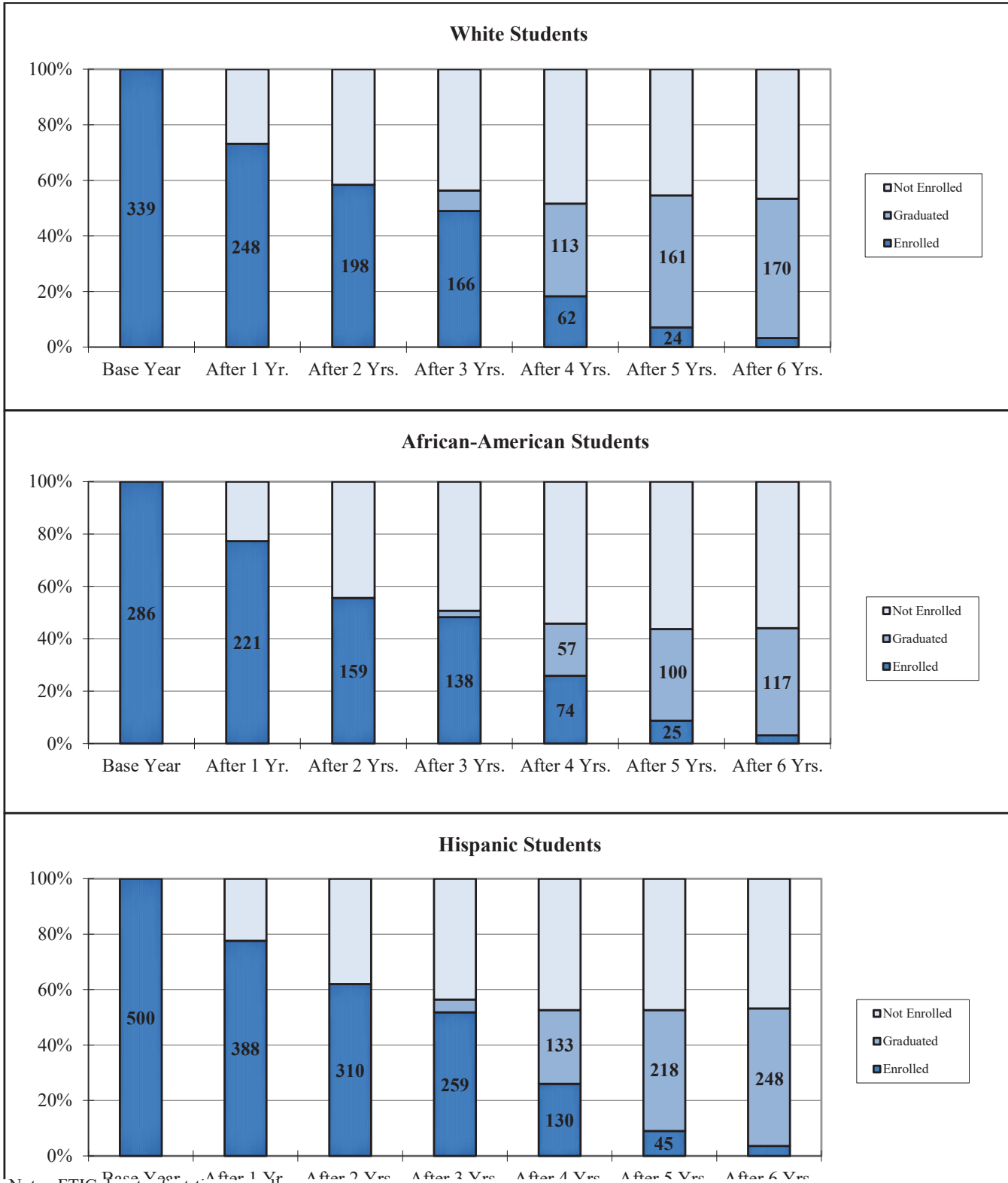
Note: FTIC denotes first-time-in-college.

**FTIC Six-Year Retention and Graduation Chart
Full-time Degree-seeking Freshmen
Fall Semester Total Cohorts, 2017 through 2019**



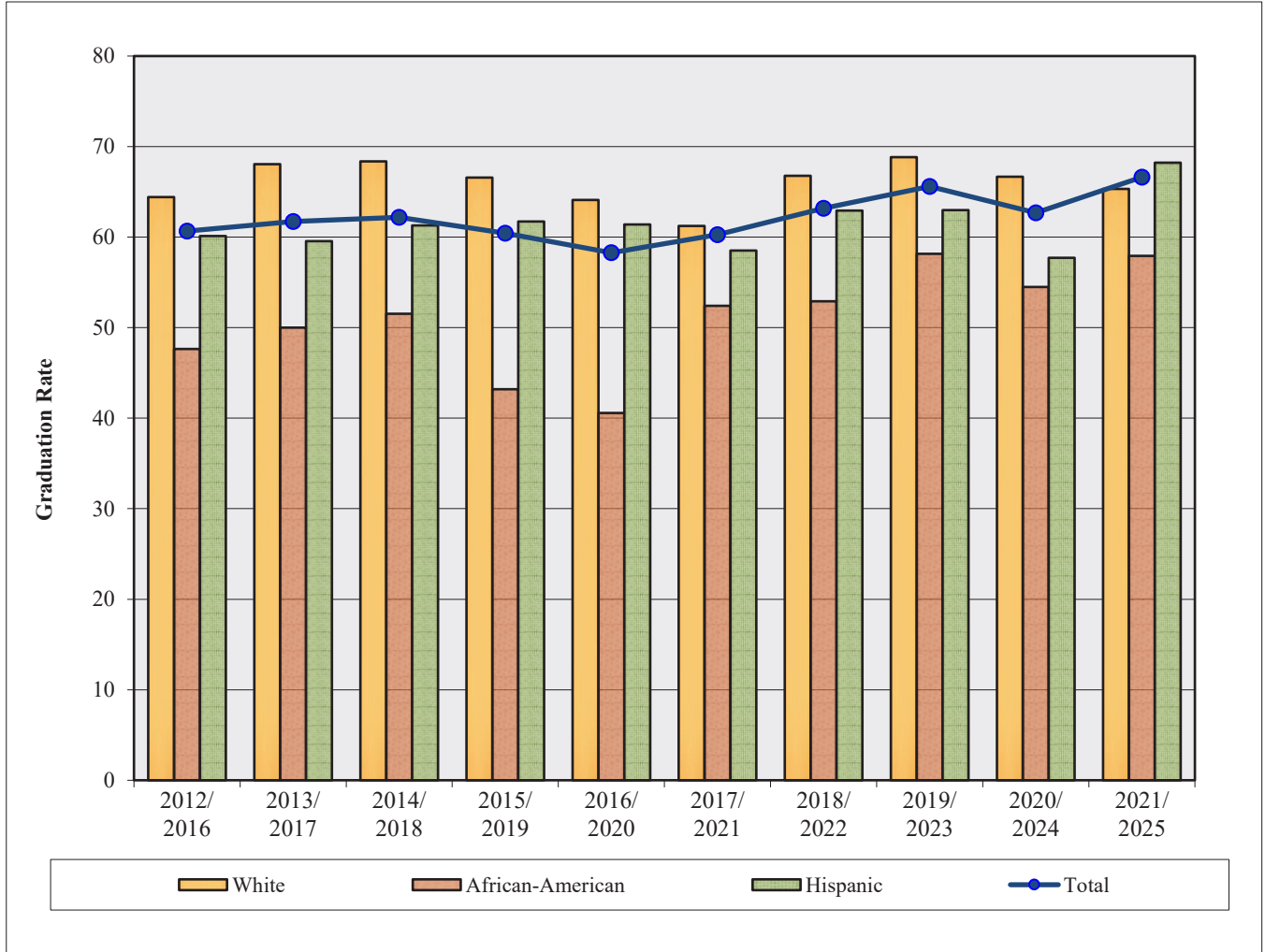
Note: FTIC denotes first-time-in-college.

FTIC Retention and Graduation Chart
Full-time Degree-seeking Freshmen
Fall Semester Cohorts by Ethnicity, 2019



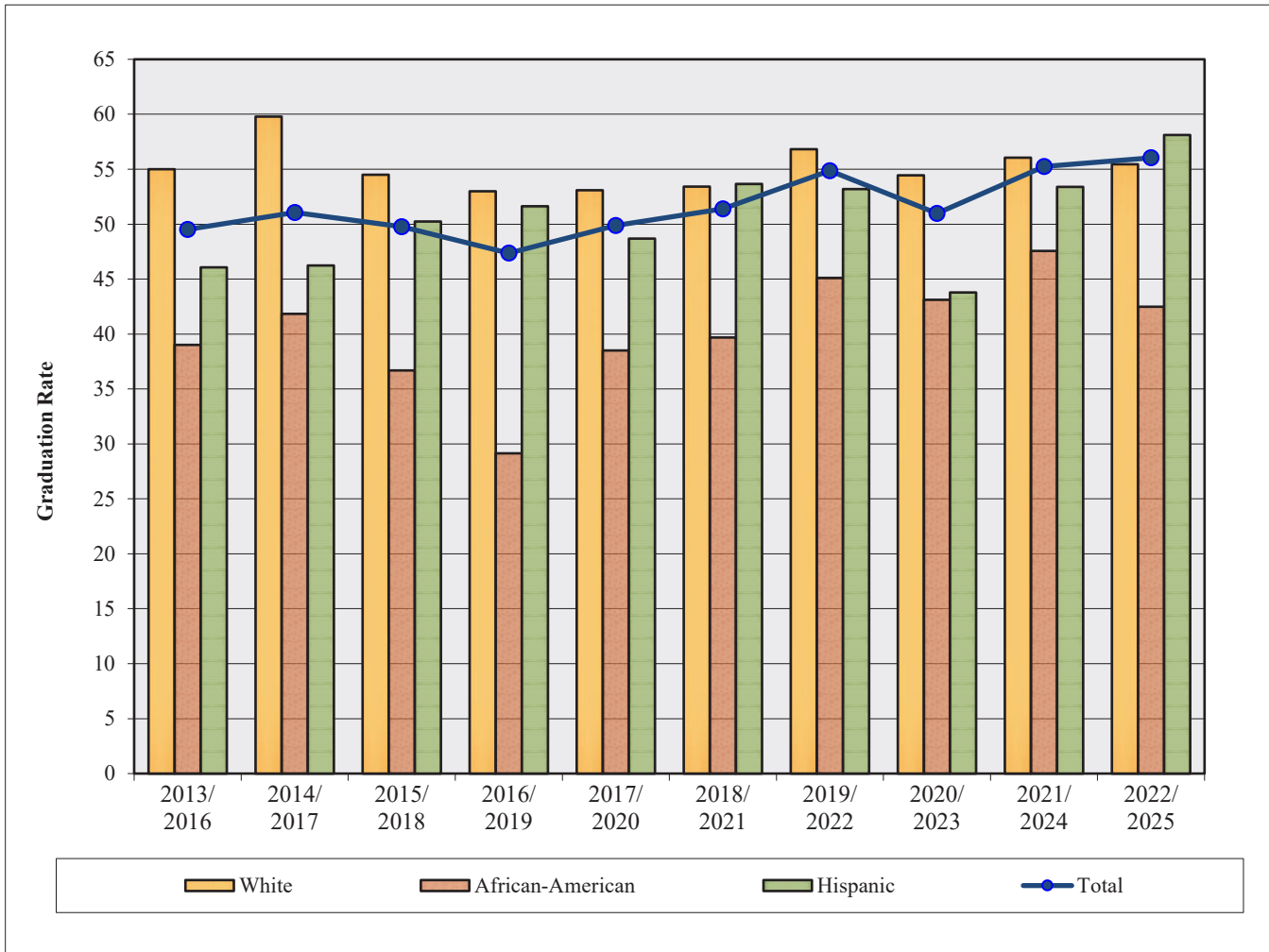
Note: FTIC denotes first-time-in-college.

**Transfer Four-year Graduation Rates Chart
Full-time Degree-seeking Undergraduates by Ethnicity
Fall Semesters, 2012/2016 through 2021/2025**



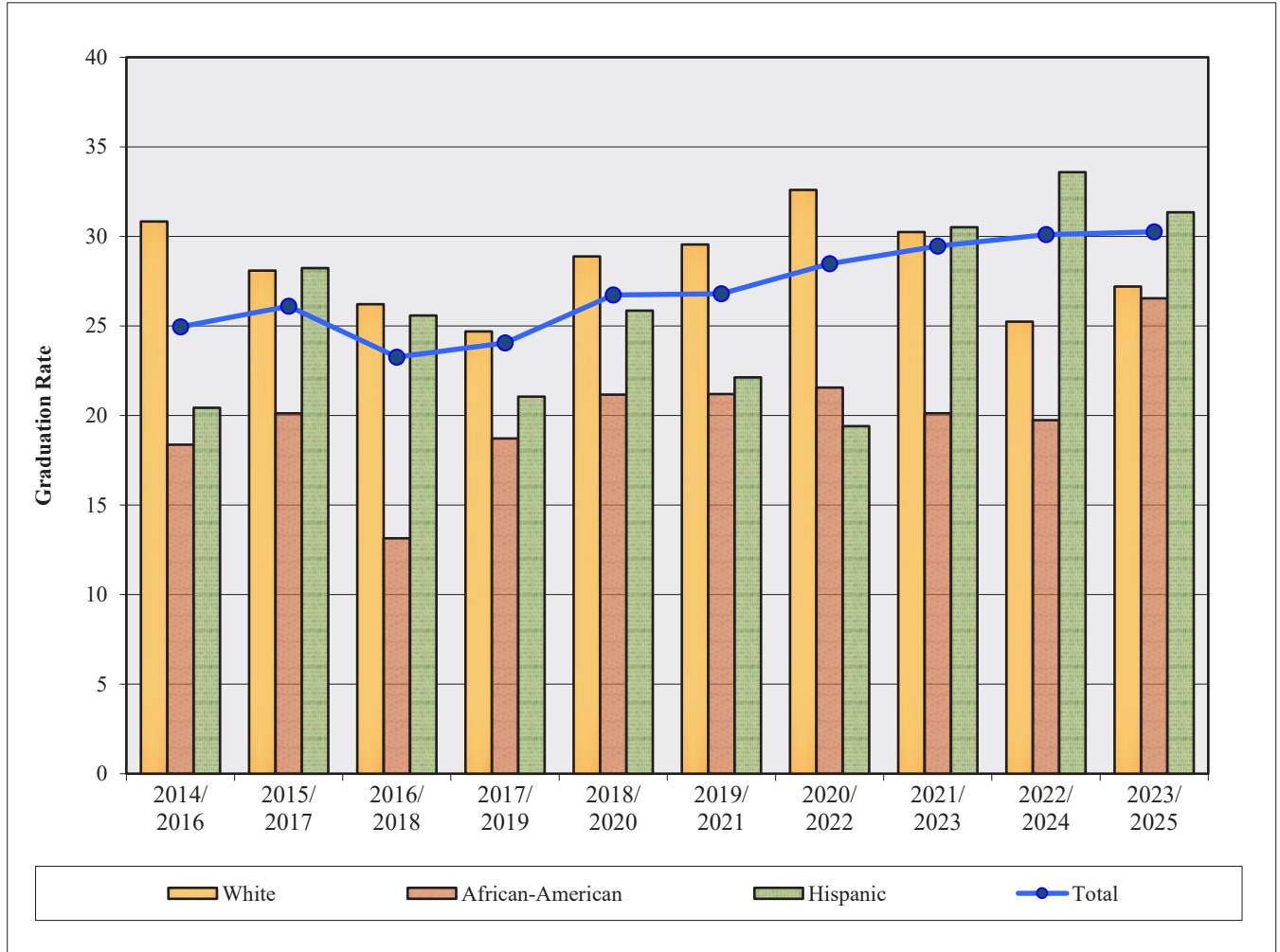
		Four-year Graduation									
Category		2012/ 2016	2013/ 2017	2014/ 2018	2015/ 2019	2016/ 2020	2017/ 2021	2018/ 2022	2019/ 2023	2020/ 2024	2021/ 2025
White	Cohort	430	360	373	356	351	325	322	308	270	248
	Rate	64.4	68.1	68.4	66.6	64.1	61.2	66.8	68.8	66.7	65.3
African-American	Cohort	212	182	196	169	175	187	189	184	167	164
	Rate	47.6	50.0	51.5	43.2	40.6	52.4	52.9	58.2	54.5	57.9
Hispanic	Cohort	173	178	186	209	215	229	205	235	201	236
	Rate	60.1	59.6	61.3	61.7	61.4	58.5	62.9	63.0	57.7	68.2
Total	Cohort	946	820	838	816	834	838	823	866	769	764
	Rate	60.7	61.7	62.2	60.4	58.3	60.3	63.2	65.6	62.7	66.6

Transfer Three-year Graduation Rates Chart
Full-time Degree-seeking Undergraduates by Ethnicity
Fall Semesters, 2013/2016 through 2022/2025



Three-year Graduation											
Category		2013/ 2016	2014/ 2017	2015/ 2018	2016/ 2019	2017/ 2020	2018/ 2021	2019/ 2022	2020/ 2023	2021/ 2024	2022/ 2025
White	Cohort	360	373	356	351	324	322	308	270	248	211
	Rate	55.0	59.8	54.5	53.0	53.1	53.4	56.8	54.4	56.0	55.5
African-American	Cohort	182	196	169	175	187	189	184	167	164	153
	Rate	39.0	41.8	36.7	29.1	38.5	39.7	45.1	43.1	47.6	42.5
Hispanic	Cohort	178	186	209	215	228	205	235	201	236	265
	Rate	46.1	46.2	50.2	51.6	48.7	53.7	53.2	43.8	53.4	58.1
Total	Cohort	820	838	816	834	836	823	866	769	764	746
	Rate	49.5	51.1	49.8	47.4	49.9	51.4	54.8	51.0	55.2	56.0

Transfer Two-year Graduation Rates Chart
Full-time Degree-seeking Undergraduates by Ethnicity
Fall Semesters, 2014/2016 through 2023/2025



		Two-year Graduation									
Category		2014/ 2016	2015/ 2017	2016/ 2018	2017/ 2019	2018/ 2020	2019/ 2021	2020/ 2022	2021/ 2023	2022/ 2024	2023/ 2025
White	Cohort Rate	373 30.8	356 28.1	351 26.2	324 24.7	322 28.9	308 29.5	270 32.6	248 30.2	210 25.2	250 27.2
African-American	Cohort Rate	196 18.4	169 20.1	175 13.1	187 18.7	189 21.2	184 21.2	167 21.6	164 20.1	152 19.7	162 26.5
Hispanic	Cohort Rate	186 20.4	209 28.2	215 25.6	228 21.1	205 25.9	235 22.1	201 19.4	236 30.5	265 33.6	268 31.3
Total	Cohort Rate	838 24.9	816 26.1	834 23.3	836 24.0	823 26.7	866 26.8	769 28.5	764 29.5	744 30.1	790 30.3

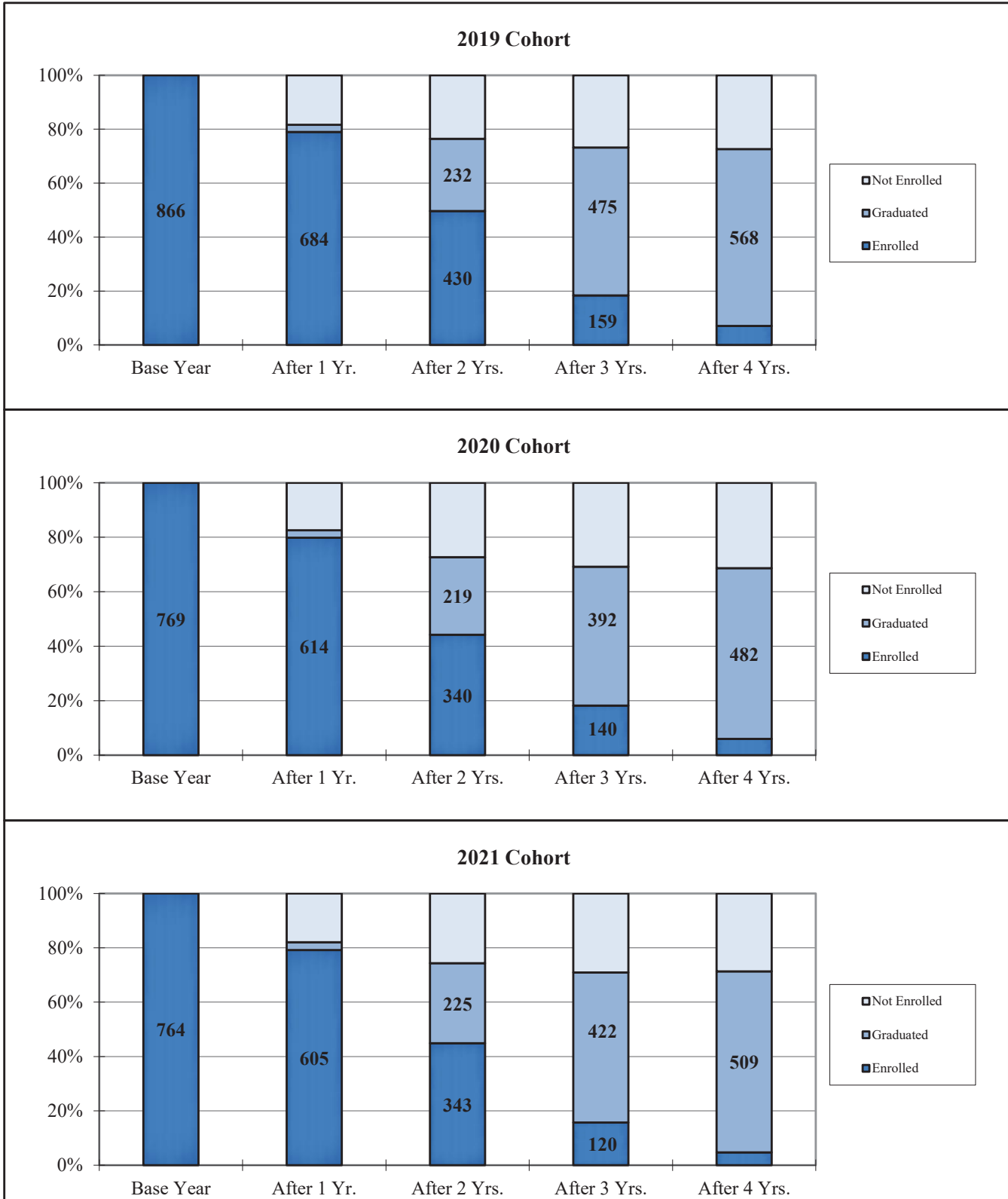
Transfer Retention and Graduation Tables
Full-time Degree-seeking Undergraduates by Ethnicity
Fall 2020 through Fall 2022 Cohorts

Fall 2020		After 1 yr.		After 2 yrs.		After 3 yrs.		After 4 yrs.		After 5 yrs.	
Retention	Cohort Base	#	%	#	%	#	%	#	%	#	%
White	270	223	82.6	118	43.7	48	17.8	15	5.6	6	2.2
African-American	167	123	73.7	76	45.5	37	22.2	13	7.8	3	1.8
Hispanic	201	153	76.1	93	46.3	35	17.4	12	6.0	9	4.5
AS/PI	59	54	91.5	25	42.4	12	20.3	4	6.8	2	3.4
AI/AN	4	3	75.0	3	75.0	1	25.0	0	0.0	0	0.0
Int'l	67	57	85.1	25	37.3	7	10.4	2	3.0	1	1.5
Other	1	1	100.0	0	0.0	0	0.0	0	0.0	0	0.0
Total	769	614	79.8	340	44.2	140	18.2	46	6.0	21	2.7
Graduation											
White		8	3.0	88	32.6	147	54.4	180	66.7	193	71.5
African-American		8	4.8	36	21.6	72	43.1	91	54.5	101	60.5
Hispanic		3	1.5	39	19.4	88	43.8	116	57.7	123	61.2
AS/PI		1	1.7	25	42.4	34	57.6	39	66.1	42	71.2
AI/AN		0	0.0	0	0.0	1	25.0	1	25.0	1	25.0
Int'l		1	1.5	30	44.8	49	73.1	54	80.6	56	83.6
Other		0	0.0	1	100.0	1	100.0	1	100.0	1	100.0
Total		21	2.7	219	28.5	392	51.0	482	62.7	517	67.2
Fall 2021											
Retention	Cohort Base	#	%	#	%	#	%	#	%		
White	248	186	75.0	110	44.4	30	12.1	9	3.6		
African-American	164	120	73.2	78	47.6	32	19.5	11	6.7		
Hispanic	236	200	84.7	108	45.8	46	19.5	14	5.9		
AS/PI	74	63	85.1	34	45.9	7	9.5	1	1.4		
AI/AN	7	6	85.7	3	42.9	2	28.6	0	0.0		
Int'l	33	28	84.8	9	27.3	3	9.1	1	3.0		
Total	764	605	79.2	343	44.9	120	15.7	36	4.7		
Graduation											
White		9	3.6	75	30.2	139	56.0	162	65.3		
African-American		8	4.9	33	20.1	78	47.6	95	57.9		
Hispanic		3	1.3	72	30.5	126	53.4	161	68.2		
AS/PI		2	2.7	28	37.8	53	71.6	62	83.8		
AI/AN		0	0.0	2	28.6	3	42.9	4	57.1		
Int'l		0	0.0	14	42.4	21	63.6	23	69.7		
Total		22	2.9	225	29.5	422	55.2	509	66.6		
Fall 2022											
Retention	Cohort Base	#	%	#	%	#	%				
White	211	167	79.1	101	47.9	38	18.0				
African-American	153	110	71.9	67	43.8	31	20.3				
Hispanic	265	216	81.5	108	40.8	38	14.3				
AS/PI	85	73	85.9	27	31.8	7	8.2				
Int'l	16	11	68.8	3	18.8	1	6.3				
Other	9	9	100.0	6	66.7	0	0.0				
Total	746	592	79.4	316	42.4	116	15.5				
Graduation											
White		2	0.9	53	25.1	117	55.5				
African-American		1	0.7	30	19.6	65	42.5				
Hispanic		2	0.8	89	33.6	154	58.1				
AS/PI		2	2.4	39	45.9	59	69.4				
Int'l		0	0.0	7	43.8	11	68.8				
Other		0	0.0	3	33.3	7	77.8				
Total		8	1.1	224	30.0	418	56.0				

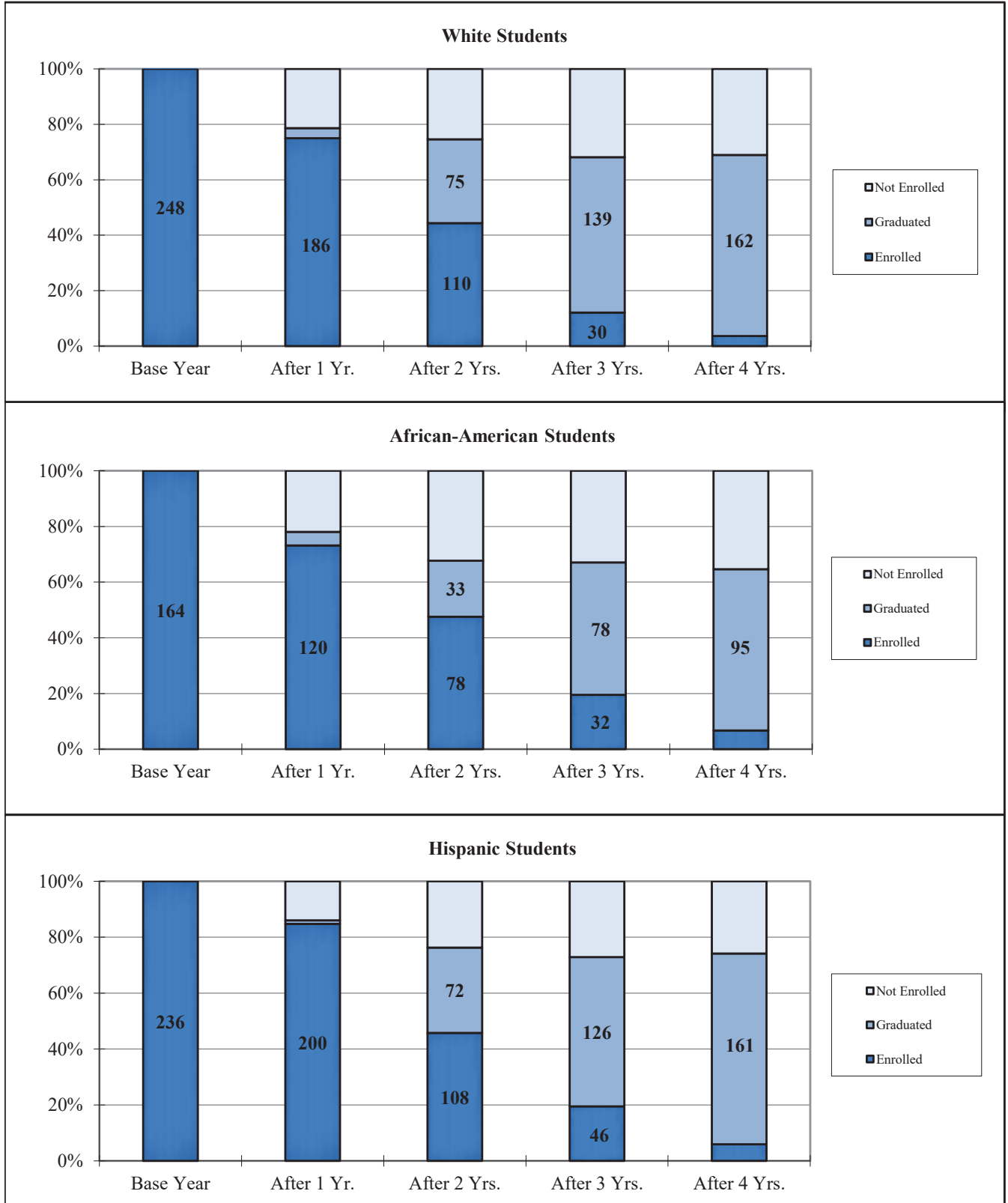
**Transfer Retention and Graduation Tables
Full-time Degree-seeking Transfers by Ethnicity
Fall 2023 through Fall 2025 Cohorts**

<u>Fall 2023</u>	<u>Cohort Base</u>	<u>After 1 yr.</u>		<u>After 2 yrs.</u>				
<u>Retention</u>		<u>#</u>	<u>%</u>	<u>#</u>	<u>%</u>			
White	250	192	76.8	112	44.8			
African-American	162	96	59.3	60	37.0			
Hispanic	268	219	81.7	127	47.4			
AS/PI	65	53	81.5	24	36.9			
AI/AN	11	6	54.5	4	36.4			
Int'l	16	15	93.8	6	37.5			
Other	18	16	88.9	5	27.8			
Total	790	597	75.6	338	42.8			
Graduation								
White		9	3.6	68	27.2			
African-American		10	6.2	43	26.5			
Hispanic		6	2.2	84	31.3			
AS/PI		0	0.0	27	41.5			
AI/AN		0	0.0	2	18.2			
Int'l		0	0.0	7	43.8			
Other		0	0.0	8	44.4			
Total		25	3.2	239	30.3			
Fall 2024								
<u>Retention</u>	<u>Cohort Base</u>	<u>After 1 yr.</u>						
White	236	191	80.9					
African-American	143	111	77.6					
Hispanic	284	239	84.2					
AS/PI	77	65	84.4					
AI/AN	3	2	66.7					
Int'l	22	20	90.9					
Total	780	639	81.9					
Graduation								
White		5	2.1					
African-American		4	2.8					
Hispanic		2	0.7					
AS/PI		1	1.3					
AI/AN		0	0.0					
Int'l		0	0.0					
Total		13	1.7					
Fall 2025								
<u>Retention</u>	<u>Cohort Base</u>							
White	199							
African-American	182							
Hispanic	245							
AS/PI	78							
AI/AN	8							
Int'l	45							
Total	769							
Graduation								
White								
African-American								
Hispanic								
AS/PI								
AI/AN								
Int'l								
Total								

Transfer Four-Year Retention and Graduation Chart
Full-time Degree-seeking Undergraduates
Fall Semester Total Cohorts, 2019 through 2021



Transfer Four-Year Retention and Graduation Chart
Full-time Degree-seeking Undergraduates
Fall Semester Cohorts by Ethnicity, 2021



Source: TWU, Office of Institutional Research & Data Management, Fact Book 2025.

New Admits Retention and Graduation Tables
Degree-seeking Master's Level Students by Ethnicity
2019-20 through 2021-22 Cohorts

2019-20		Cohort		<= 1 yr.		<= 2 yrs.		<= 3 yrs.		<= 4 yrs.		<= 5 yrs.	
Retention	Base	#	%	#	%	#	%	#	%	#	%	#	%
White	866	732	84.5	507	58.5	139	16.1	40	4.6	6	0.7		
African-American	365	298	81.6	184	50.4	49	13.4	12	3.3	7	1.9		
Hispanic	351	288	82.1	187	53.3	58	16.5	19	5.4	7	2.0		
AS/PI	193	173	89.6	120	62.2	32	16.6	8	4.1	3	1.6		
AI/AN	21	15	71.4	13	61.9	3	14.3	0	0.0	0	0.0		
Int'l	43	33	76.7	22	51.2	6	14.0	2	4.7	2	4.7		
Other	14	13	92.9	9	64.3	4	28.6	0	0.0	0	0.0		
Total	1,853	1,552	83.8	1,042	56.2	291	15.7	81	4.4	25	1.3		
Graduation													
White		14	1.6	190	21.9	543	62.7	659	76.1	694	80.1		
African-American		8	2.2	84	23.0	212	58.1	253	69.3	263	72.1		
Hispanic		9	2.6	96	27.4	214	61.0	253	72.1	270	76.9		
AS/PI		2	1.0	36	18.7	128	66.3	157	81.3	163	84.5		
AI/AN		0	0.0	2	9.5	11	52.4	15	71.4	15	71.4		
Int'l		0	0.0	10	23.3	24	55.8	28	65.1	30	69.8		
Other		1	7.1	4	28.6	9	64.3	13	92.9	13	92.9		
Total		34	1.8	422	22.8	1,141	61.6	1,378	74.4	1,448	78.1		
2020-21													
Retention	Base	#	%	#	%	#	%	#	%	#	%	#	%
White	927	750	80.9	486	52.4	138	14.9	34	3.7	21	2.3		
African-American	411	320	77.9	198	48.2	74	18.0	16	3.9	11	2.7		
Hispanic	505	415	82.2	261	51.7	82	16.2	19	3.8	7	1.4		
AS/PI	221	186	84.2	116	52.5	37	16.7	7	3.2	2	0.9		
AI/AN	18	14	77.8	10	55.6	3	16.7	1	5.6	1	5.6		
Int'l	24	22	91.7	12	50.0	3	12.5	2	8.3	0	0.0		
Other	20	17	85.0	13	65.0	5	25.0	1	5.0	0	0.0		
Total	2,126	1,724	81.1	1,096	51.6	342	16.1	80	3.8	42	2.0		
Graduation													
White		13	1.4	194	20.9	545	58.8	665	71.7	688	74.2		
African-American		6	1.5	102	24.8	222	54.0	279	67.9	291	70.8		
Hispanic		12	2.4	127	25.1	295	58.4	364	72.1	380	75.2		
AS/PI		4	1.8	59	26.7	150	67.9	180	81.4	188	85.1		
AI/AN		0	0.0	3	16.7	10	55.6	12	66.7	12	66.7		
Int'l		2	8.3	8	33.3	17	70.8	19	79.2	20	83.3		
Other		1	5.0	3	15.0	8	40.0	14	70.0	15	75.0		
Total		38	1.8	496	23.3	1,247	58.7	1,533	72.1	1,594	75.0		
2021-22													
Retention	Base	#	%	#	%	#	%	#	%	#	%	#	%
White	739	619	83.8	372	50.3	111	15.0	22	3.0				
African-American	298	249	83.6	136	45.6	39	13.1	6	2.0				
Hispanic	414	341	82.4	221	53.4	74	17.9	18	4.3				
AS/PI	210	178	84.8	115	54.8	43	20.5	10	4.8				
AI/AN	18	16	88.9	11	61.1	3	16.7	1	5.6				
Int'l	17	15	88.2	10	58.8	3	17.6	1	5.9				
Other	13	13	100.0	8	61.5	1	7.7	1	7.7				
Total	1,709	1,431	83.7	873	51.1	274	16.0	59	3.5				
Graduation													
White		18	2.4	202	27.3	464	62.8	550	74.4				
African-American		3	1.0	86	28.9	182	61.1	219	73.5				
Hispanic		11	2.7	107	25.8	256	61.8	311	75.1				
AS/PI		5	2.4	52	24.8	126	60.0	162	77.1				
AI/AN		0	0.0	2	11.1	8	44.4	11	61.1				
Int'l		0	0.0	3	17.6	11	64.7	12	70.6				
Other		0	0.0	4	30.8	11	84.6	11	84.6				
Total		37	2.2	456	26.7	1,058	61.9	1,276	74.7				

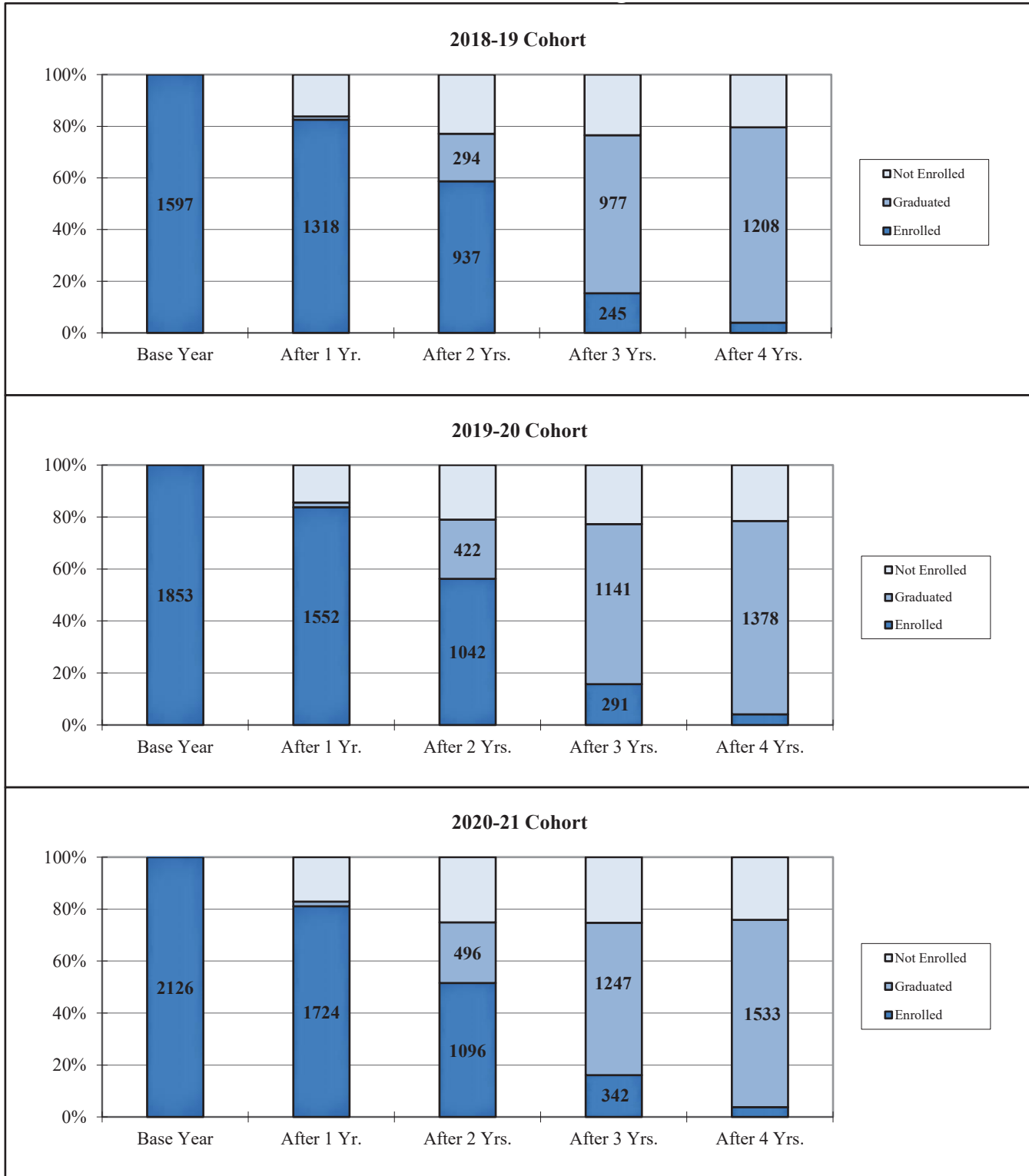
The cohort includes all degree-seeking masters level students who are newly admitted into a program during the academic year.

New Admits Retention and Graduation Tables
 Degree-seeking Master's Level Students by Ethnicity
 2022-23 through 2024-25 Cohorts

<u>2022-23</u>		<u>Cohort</u>		<u><= 1 yr.</u>		<u><= 2 yrs.</u>		<u><= 3 yrs.</u>			
<u>Retention</u>	<u>Base</u>	<u>#</u>	<u>%</u>	<u>#</u>	<u>%</u>	<u>#</u>	<u>%</u>				
White	614	511	83.2	304	49.5	67	10.9				
African-American	289	246	85.1	123	42.6	39	13.5				
Hispanic	422	340	80.6	221	52.4	44	10.4				
AS/PI	168	143	85.1	100	59.5	30	17.9				
Int'l	29	23	79.3	14	48.3	1	3.4				
Other	28	19	67.9	12	42.9	3	10.7				
Total	1,570	1,300	82.8	785	50.0	186	11.8				
<u>Graduation</u>											
White		14	2.3	174	28.3	420	68.4				
African-American		4	1.4	106	36.7	190	65.7				
Hispanic		19	4.5	114	27.0	291	69.0				
AS/PI		5	3.0	40	23.8	111	66.1				
Int'l		1	3.4	8	27.6	21	72.4				
Other		0	0.0	5	17.9	15	53.6				
Total		43	2.7	450	28.7	1,061	67.6				
<u>2023-24</u>		<u>Cohort</u>		<u><= 1 yr.</u>		<u><= 2 yrs.</u>					
<u>Retention</u>	<u>Base</u>	<u>#</u>	<u>%</u>	<u>#</u>	<u>%</u>						
White	554	476	85.9	305	55.1						
African-American	274	225	82.1	130	47.4						
Hispanic	389	326	83.8	212	54.5						
AS/PI	139	114	82.0	81	58.3						
Int'l	28	25	89.3	13	46.4						
Other	26	20	76.9	14	53.8						
Total	1,425	1,196	83.9	761	53.4						
<u>Graduation</u>											
White		9	1.6	144	26.0						
African-American		1	0.4	80	29.2						
Hispanic		5	1.3	102	26.2						
AS/PI		3	2.2	33	23.7						
Int'l		0	0.0	10	35.7						
Other		1	3.8	8	30.8						
Total		19	1.3	380	26.7						
<u>2024-25</u>		<u>Cohort</u>		<u><= 1 yr.</u>							
<u>Retention</u>	<u>Base</u>	<u>#</u>	<u>%</u>								
White	591	496	83.9								
African-American	362	287	79.3								
Hispanic	475	387	81.5								
AS/PI	173	144	83.2								
AI/AN	18	13	72.2								
Int'l	33	31	93.9								
Other	68	62	91.2								
Total	1,720	1,420	82.6								
<u>Graduation</u>											
White		10	1.7								
African-American		15	4.1								
Hispanic		12	2.5								
AS/PI		5	2.9								
AI/AN		1	5.6								
Int'l		0	0.0								
Other		1	1.5								
Total		44	2.6								

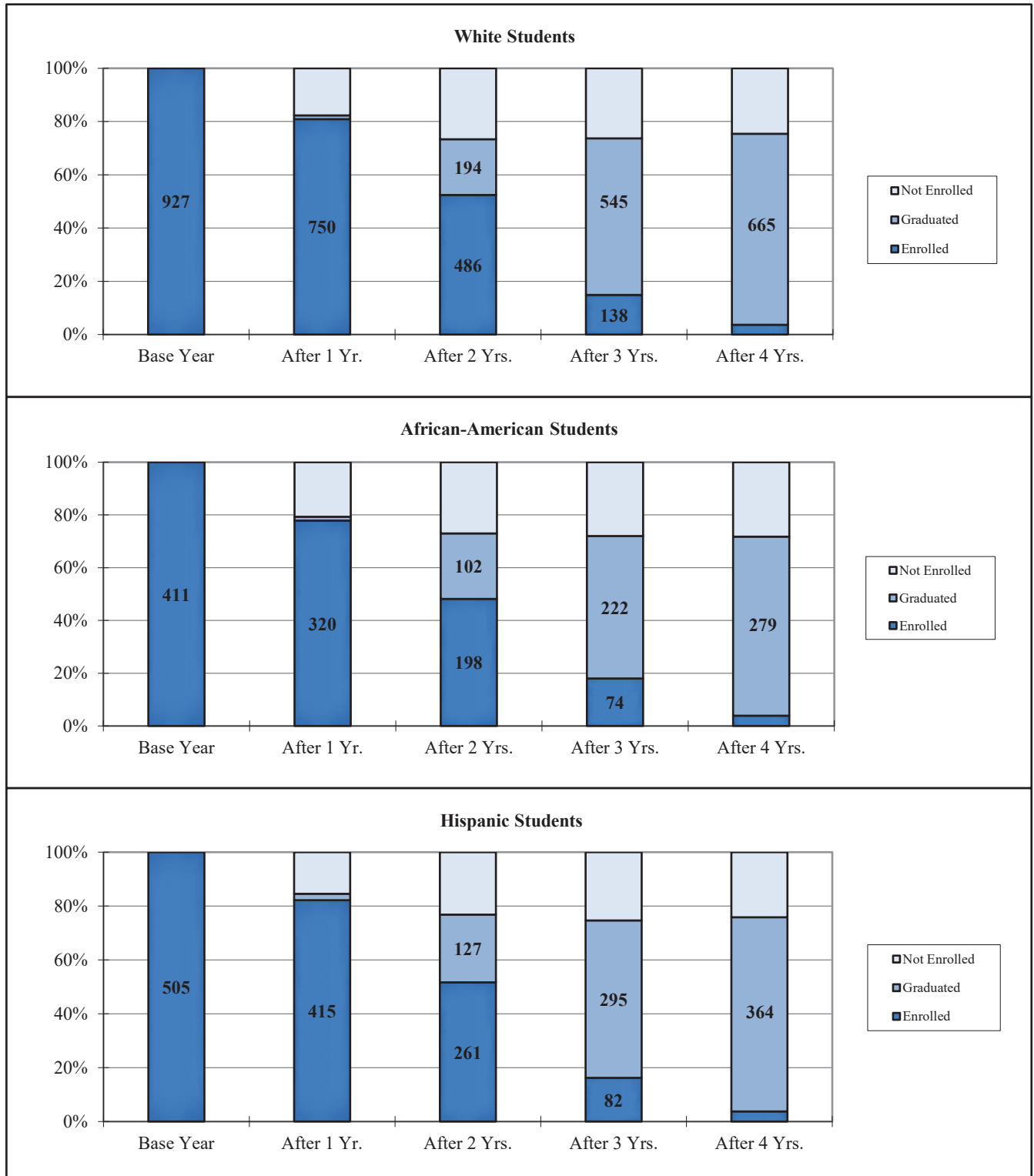
The cohort includes all degree-seeking masters level students who are newly admitted into a program during the academic year.

New Admit Four-Year Retention and Graduation Chart
Degree-seeking Master's Level Students
Total Cohorts, 2018-19 through 2020-21



The cohort includes all degree-seeking masters level students who are newly admitted into a program during the academic year.

**New Admit Four-Year Retention and Graduation Chart
Degree-seeking Master's Level Students
Total Cohorts by Ethnicity, 2020-21**



The cohort includes all degree-seeking masters level students who are newly admitted into a program during the academic year.

Source: TWU, Office of Institutional Research & Data Management, Fact Book 2025.